

SINGLE STOREY HOME FROM  
**\$171,900\***

\*LAKELANDS 14 WITH VISTA FAÇADE PRICE  
INCLUDES \$10K VIC GOVT FIRST HOME OWNER  
GRANT & EXCLUDES ^SITE COSTS. BALLARAT  
BUILD REGION ONLY.



---

**BRINGING HOME PRICES  
BACK DOWN TO EARTH**

---

131 828  
[abchomes.com.au](http://abchomes.com.au)

\*House Price Back to Earth promotion available on deposits from 14 January 2025 on Lakelands 14 with Vista façade (pictured) and our Elanora 25 with Vue façade (from \$286,000) for a limited time. Prices include First Home Owner government grant. For first home owner grant eligibility and details visit [www.sro.vic.gov.au](http://www.sro.vic.gov.au). ^Site Costs are site specific & will vary according to your land. Land is not included in price. VIC Builder licence CDBU-52968



**AUSTRALIAN  
BUILDINGCO.**

# Lakelands 14 Vista Facade

SINGLE STOREY HOME FROM

# \$171,900\*

Inc \$10K  
FHB Grant

\*PRICE INCLUDES 10K FIRST HOME OWNERS GRANT  
BALLARAT BUILD REGION. ^EXCLUDES SITE COSTS

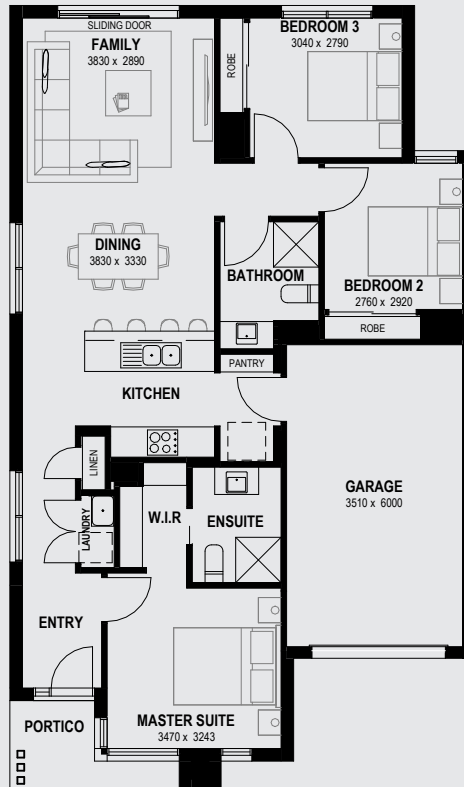


Image contains items not supplied by Australian Building Company namely landscaping and fencing. Pricing excludes driveway.



Say hello to the Lakelands 14, the compact masterpiece that proves good things do come in small packages—without a small fortune. This isn't just a home; it's a cozy hug from a budget-friendly universe where the master suite spoils you with a walk-in robe and ensuite (because you deserve it), and the family room is perfect for everything from movie marathons to awkward game nights. With three bedrooms thoughtfully designed for comfort, you'll wonder how we crammed so much awesome into 130 square meters.

But we didn't stop there—oh no. The Lakelands 14 also rocks a kitchen and dining combo that practically begs you to unleash your inner chef. Need more space? The garage has you covered, whether it's for your car or that collection of questionable gym equipment you swear you'll use someday. Affordable, functional, and undeniably stylish, this is the home that brings your dreams—and prices—back down to earth.



# Elanora 25

## Vue Facade

DOUBLE STOREY HOME FROM

# \$286,000\*

Inc \$10K  
FHB Grant

\*PRICE INCLUDES 10K FIRST HOME OWNERS GRANT  
BALLARAT BUILD REGION. ^EXCLUDES SITE COSTS



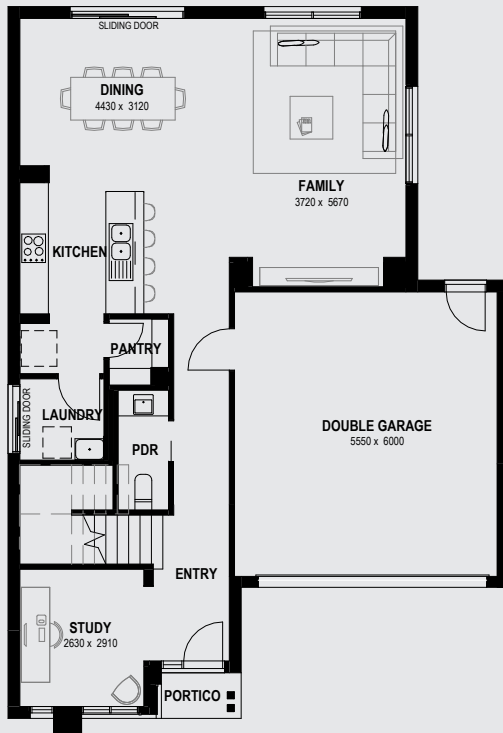
Image contains items not supplied by Australian Building Company namely landscaping and fencing. Pricing excludes driveway.

 4
  2
  2

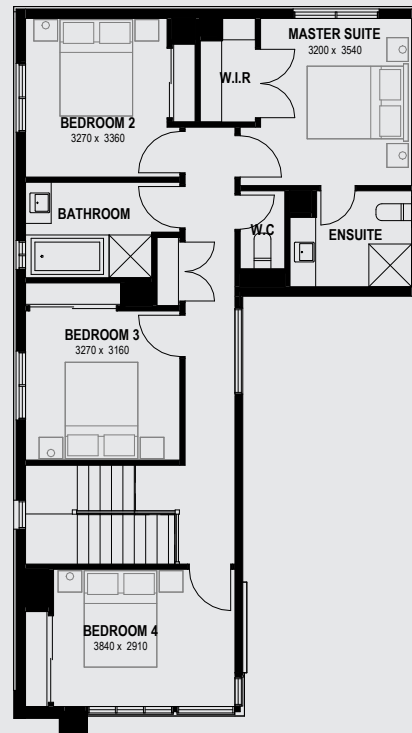
 24.36 sq

Introducing the Elanora 25: where style meets savings, and your dream home is finally within arm's reach. It's not just a house; it's a fortress of affordability, defying the gravity of skyrocketing home prices. With four bedrooms spacious enough to host your in-laws and still have room for a wine fridge, a master suite that screams "I'm the boss," and a family area so roomy you'll actually look forward to hosting game night, this house packs in the luxe without the ludicrous price tag. And don't even get me started on the garage—big enough for your car and your half-hearted DIY projects.

But wait, there's more! (Cue the infomercial voice.) We don't just build homes; we build futures—grounded, financially savvy, Pinterest-worthy futures. With the dining and kitchen flowing seamlessly, you'll whip up meals so chic even your microwave popcorn feels gourmet. Plus, every square meter is designed with purpose, proving that you don't need to break the bank to break ground on a home that's as stunning as it is practical. Ready to make your wallet—and your heart—happy? This is your sign. Welcome home.



GROUND FLOOR PLAN



FIRST FLOOR PLAN

# We're giving you 4 reasons to smile



---

Whether it's our industry best quality, critically acclaimed designs or simple and stress free process, you can be sure that you are in safe hands with Australian Building Company.

\*House Price Back to Earth promotion available on deposits from 14 January 2025 on Lakelands 14 with Vista façade (pictured) and our Elanora 25 with Vue façade (from \$286,000) for a limited time. Prices include First Home Owner government grant. For first home owner grant eligibility and details visit [www.sro.vic.gov.au](http://www.sro.vic.gov.au). ^Site Costs are site specific & will vary according to your land. Land is not included in price. VIC Builder licence CDBU-52968

131 828  
[abchomes.com.au](http://abchomes.com.au)

Easy as



**AUSTRALIAN  
BUILDINGCO.**