

# 20 SQUARES FOR JUST \$200,900\*

\*PRICE INCLUDES 10K FIRST HOME OWNERS GRANT  
GEELONG BUILD REGION ONLY. ^EXCLUDES SITE COSTS



 4  2  2  20 sqs

## BRINGING HOME PRICES BACK DOWN TO EARTH

131 828  
[abchomes.com.au](http://abchomes.com.au)

\*House Price Back to Earth promotion available on deposits from 17 March 2025 on Lloyd 20 with Vista façade (pictured) and our Elanora 25 with Vue façade (from \$280,900) for a limited time. Prices include First Home Owner government grant. For first home owner grant eligibility and details visit [www.sro.vic.gov.au](http://www.sro.vic.gov.au). ^Site Costs are site specific & will vary according to your land. Land is not included in price. VIC Builder licence CDBU-52968



**AUSTRALIAN  
BUILDINGCO.**

# Lloyd Vista Facade

20 SQUARES FOR JUST

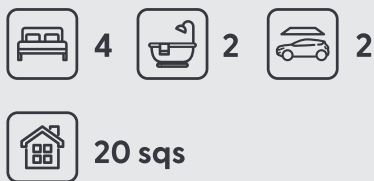
# \$200,900\*

Inc \$10K  
FHB Grant

\*PRICE INCLUDES 10K FIRST HOME OWNERS GRANT  
GEEELONG BUILD REGION ONLY. ^EXCLUDES SITE COSTS

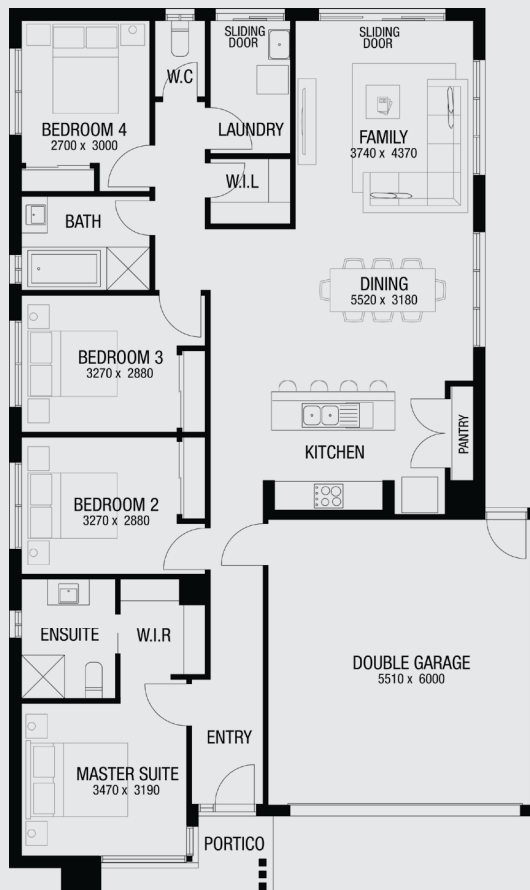


Image contains items not supplied by Australia Building Company namely landscaping and fencing. Price excludes driveway and front door.



Say hello to the Lloyd 20, a four-bedroom, single-storey home that proves you can fit more in without stretching your budget. Designed for growing families or those who just love a little extra space, this home packs serious comfort into every square metre. At the heart of it all is the master suite, complete with a walk-in robe and private ensuite ... because you deserve a little luxury. Three additional bedrooms offer the perfect retreat for kids, guests, or even a home office (hello, productivity). And with a spacious open-plan living area, you'll have room for everything from movie nights to impromptu dance-offs.

The kitchen and dining zone is built for connection, whether you're hosting Sunday brunch or speed-running dinner before soccer practice. And let's not forget the double garage, ideal for your car, extra storage, or that home gym you promise to use. Smart, stylish, and surprisingly affordable, the Lloyd 20 isn't just a house, it's proof that good things really do come in well-designed packages.



# Elanora 25

## Vue Facade

DOUBLE STOREY HOME FROM  
**\$280,900\***



Image contains items not supplied by Australian Building Company namely landscaping and fencing. Pricing excludes driveway.

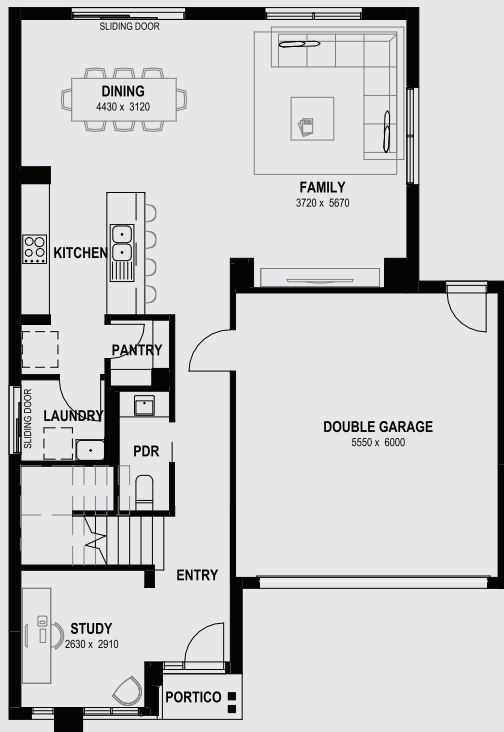
**Inc \$10K  
 FHB Grant**

\*PRICE INCLUDES 10K FIRST HOME OWNERS GRANT  
 GEELONG BUILD REGION. ^EXCLUDES SITE COSTS

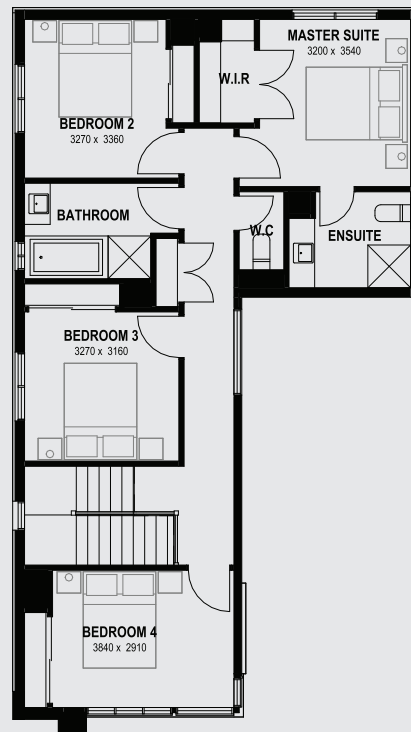
 4  
  2  
  2  
 **24.36 sq**

Introducing the Elanora 25: where style meets savings, and your dream home is finally within arm's reach. It's not just a house; it's a fortress of affordability, defying the gravity of skyrocketing home prices. With four bedrooms spacious enough to host your in-laws and still have room for a wine fridge, a master suite that screams "I'm the boss," and a family area so roomy you'll actually look forward to hosting game night, this house packs in the luxe without the ludicrous price tag. And don't even get me started on the garage—big enough for your car and your half-hearted DIY projects.

But wait, there's more! (Cue the infomercial voice.) We don't just build homes; we build futures—grounded, financially savvy, Pinterest-worthy futures. With the dining and kitchen flowing seamlessly, you'll whip up meals so chic even your microwave popcorn feels gourmet. Plus, every square meter is designed with purpose, proving that you don't need to break the bank to break ground on a home that's as stunning as it is practical. Ready to make your wallet—and your heart—happy? This is your sign. Welcome home.



GROUND FLOOR PLAN



FIRST FLOOR PLAN



# We're giving you 4 reasons to smile



---

Whether it's our industry best quality, critically acclaimed designs or simple and stress free process, you can be sure that you are in safe hands with Australian Building Company.

\*House Price Back to Earth promotion available on deposits from 17 March 2025 on Lloyd 20 with Vista façade (pictured) and our Elanora 25 with Vue façade (from \$280,900) for a limited time. Prices include First Home Owner government grant. For first home owner grant eligibility and details visit [www.sro.vic.gov.au](http://www.sro.vic.gov.au). \*\*Site Costs are site specific & will vary according to your land. Land is not included in price. VIC Builder licence CDBU-52968

131 828  
[abchomes.com.au](http://abchomes.com.au)

Easy as



**AUSTRALIAN  
BUILDINGCO.**